



# **BUSINESS INDICATORS**

**AUSTRALIAN  
CAPITAL  
TERRITORY**

EMBARGO: 11:30AM (CANBERRA TIME) FRI 20 OCT 2000

## **C O N T E N T S**

	<i>page</i>
Notes .....	2
Summary of findings .....	3
Selected business indicators .....	5
FEATURE ARTICLE	
Computing Services Industry .....	6
TABLES	
<b>1</b> Business expectations: trading performance, operating income . . . .	9
<b>2</b> Business indicators .....	10
<b>3</b> ACT in relation to the rest of Australia .....	13
<b>4</b> ACT in relation to the rest of Australia—percentage changes . . . . .	14
INFORMATION	
Index of Feature Articles published in ACT Business Indicators .....	15

- For further information about these and related statistics, contact Ria Percival on Canberra 02 6207 0311, or the National Information Service on 1300 135 070.

## NOTES

### FORTHCOMING ISSUES

<i>ISSUE</i>	<i>RELEASE DATE</i>
November 2000	24 November 2000
December 2000	22 December 2000
January 2001	29 January 2001
February 2001	26 February 2001
March 2001	26 March 2001
April 2001	20 April 2001

### DATA CHANGES

ABS statistical series are being impacted to varying degrees as a result of The New Tax System (TNTS), introduced in Australia from 1 July 2000. TNTS includes the removal of Wholesale Sales Tax and the introduction of a Goods and Services Tax (GST).

### IMPACT OF THE NEW TAX SYSTEM ON DATA SERIES IN THIS PUBLICATION

Users of Building Approvals data should exercise caution when analysing movements in the value series over the next few months as they have been affected in a number of ways. For further information see *Building Approvals, Australia* (Cat. no. 8731.0).

Users of Capital Expenditure data should exercise caution when analysing estimates of expected expenditure for 2000–01 financial year. Businesses in the Survey of New Capital Expenditure have been asked to report expected expenditure for 2000–01 financial year based on the cost to them under TNTS. For further information see *Private New Capital Expenditure, State Estimates* (Cat. no. 5646.0).

Users of Retail data should exercise caution when analysing movements in the series over time. Estimates of retail turnover in both original and seasonally adjusted terms reflect unusually large spending ahead of the GST. The trend series attempts to measure underlying behaviour and, in the short term, this measurement may be adversely affected by an unusual influence in the original and seasonally adjusted data. For further information see *Retail Trade, Australia* (Cat. no. 8501.0).

### SYMBOLS AND OTHER USAGES

ACT	Australian Capital Territory
n.a.	not available
no.	number
n.p.	not available for publication
p	preliminary
. .	not applicable
*	Represents data with a standard error of greater than 25%. Caution should be exercised when using this data.
—	nil or rounded to zero

Peter Damcevski  
Acting Regional Director, Australian Capital Territory

## SUMMARY OF FINDINGS

### UPDATED SERIES

Series updated since the September 2000 issue are: population, building approvals and commencements, engineering construction, new motor vehicle registrations, labour force, industrial disputes, retail turnover, accommodation establishments, business expectations, private new capital expenditure, job vacancies and wage and salary earners. The feature article, beginning on page 6 is Computing Services Industry.

### NOTABLE MOVEMENTS

**Population** During the March quarter 2000 the estimated resident population of the ACT was 311,086, an increase of 775 persons (0.3%) since the December quarter 1999 and an increase of 2,261 persons (0.7%) since the March quarter 1999. The national population grew by 0.3% to 19,104,556 persons over the March quarter 2000.

During the March 2000 quarter there was a net migration into the ACT of 75 persons. This compares with 328 persons net migration out of the ACT for the March quarter 1999.

For the March quarter 2000 the natural increase in the ACT was 700 persons, an increase of 6.1% over the previous quarter.

**Building approvals** The trend number of dwelling units approved in the ACT decreased by 5.2% to 128 dwelling units in August 2000. Nationally, the trend number of dwelling units approved decreased by 9.1% to 9,100 dwelling units in this period.

The value of non-residential building approvals in the ACT was \$10.3 million in August 2000, a decrease of \$4.7 million over the previous month and a decrease of \$1.8 million over August 1999. Nationally, the value of non-residential building approvals decreased by 17.3% over the previous month and was down 11.3% over August 1999.

**Motor vehicle registrations** The trend estimate for ACT new motor vehicle registrations in August 2000 was 1,112, an increase of 1.3% over the previous month, and up 3.0% over August 1999. Nationally, the trend for total new motor vehicle registrations in August 2000 increased 5% to 69,596 over July 2000 and was up 13.5% over August 1999 .

**Labour force** At September 2000 the trend unemployment rate for the ACT decreased 0.2 percentage points to 4.4% (7,900 persons) compared to the previous month, and decreased 1.3 percentage points compared to September 1999. Compared with the previous month, trend employment increased 0.6% (to 170,400 persons). The trend participation rate in the ACT increased by 0.2 percentage points to 73.3%.

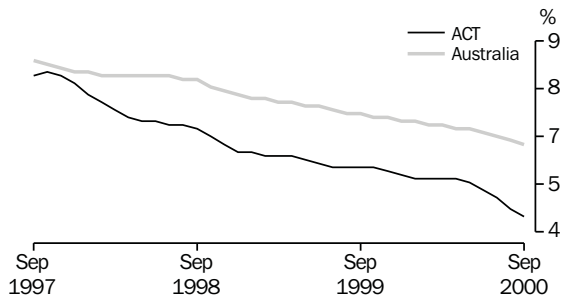
Nationally, trend employment increased by 0.2% (to 9,133,200 persons) from the previous month, while trend unemployment decreased 1.2% (to 613,200 persons) for September 2000. The national trend unemployment

rate decreased 0.1 percentage points to 6.3%. The national participation rate remained steady at 63.9%.

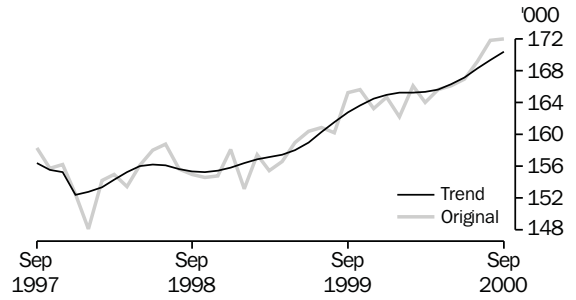
Industrial disputes	For the 12 months ended June 2000 there were 33 working days lost per thousand employees in the ACT compared to 104 days nationally. In comparison with the 12 months ended June 1999, there was an increase of 230% (23 days per 1,000 employees) for the ACT and an increase of 86% (48 days) nationally.
Retail turnover	The trend estimate for retail turnover in the ACT for August 2000 was not available for publication, however, it was \$246.4 million in June 2000. The national trend retail turnover was also not available for publication for July 2000, however, it was \$12,234.1 million in June 2000. See impact of new tax system on data series, page 2.
Tourist accommodation	The room occupancy rate for ACT hotels, motels, serviced apartments and guest houses in the June quarter 2000 was 64.7%, an increase of 7.1 percentage points over the previous quarter, and up 3.8 percentage points over the June quarter 1999. Nationally, in the June quarter, the room occupancy rate decreased by 1.1 percentage points to 57.1%, an increase of 0.9 percentage points over the corresponding quarter 1999.
Business expectations	Business expectations in the ACT indicate a positive movement of 4.1% in the short term expected operating income from the sales of goods and services for the December quarter 2000. Nationally, there is an expected short term increase of 1.3% in the December quarter 2000. In the medium term (September quarter 2000 to September quarter 2001), growth of 4.3% in sales is expected for the ACT, whilst the national expectation is 2.0%.
Private new capital expenditure	The trend private new capital expenditure in the ACT in the June quarter 2000 was \$106 million, an increase of 6% over the previous quarter, and an increase of 43.2% over the June quarter 1999. Original private new capital expenditure on buildings and structures of \$24 million increased 14.3% over the previous quarter and increased 4.3% over the previous year. Equipment, plant and machinery increased 21.1% to \$86 million over the previous quarter and also increased 75.5% over the June quarter 1999. Nationally, the trend private new capital expenditure was up 0.7% over the previous quarter and down 2.2% over the June quarter 1999.
Job vacancies	There were 3,000 job vacancies in the ACT in the August quarter 2000 with no significant change over the previous quarter, and a decrease of 9.1% over the corresponding quarter 1999. Nationally, job vacancies for the August quarter 2000 increased by 19.6% over the May quarter 2000, and increased 16.1% on the previous year.
Wage and salary earners	The trend number of wage and salary earners (excluding self-employed persons) employed in the public and private sectors in the ACT was 154,800 persons in the June quarter 2000, an increase of 2,400 persons (1.6%) over the February quarter 2000. This compares to a national increase of 50,100 (0.7%) in the same period. The proportion of private sector wage and salary earners in the ACT is 55%.

# SELECTED BUSINESS INDICATORS

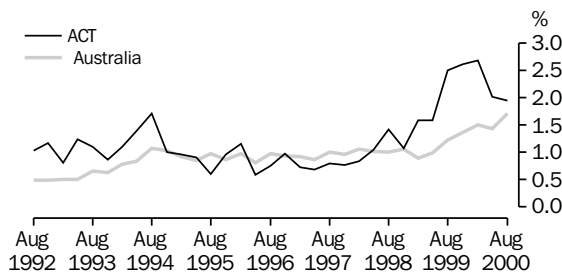
LABOUR FORCE—TREND UNEMPLOYMENT RATE



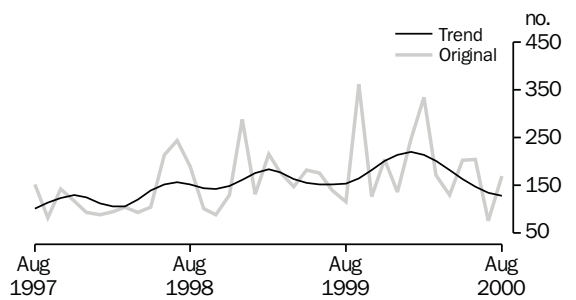
LABOUR FORCE, Employment



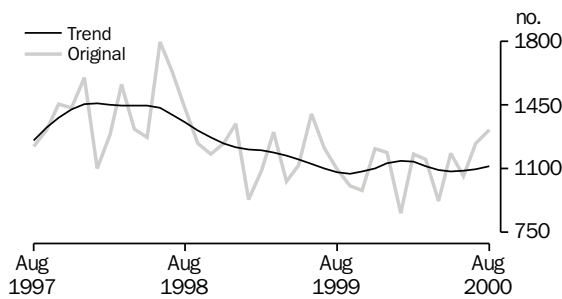
JOB VACANCY RATES, ACT and Australia—1992 to 2000



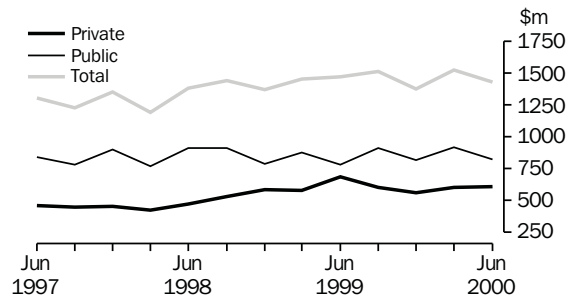
BUILDING APPROVAL—DWELLING UNITS APPROVED



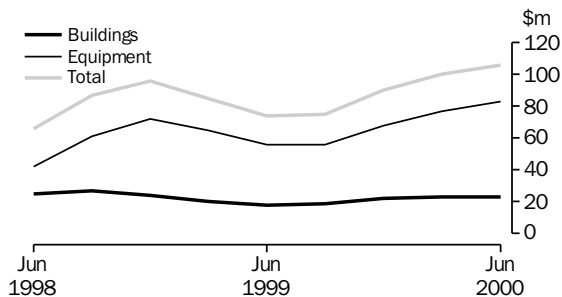
NEW MOTOR VEHICLE REGISTRATIONS



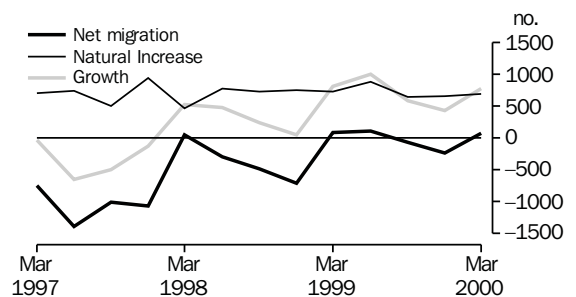
GROSS EARNINGS, By Sector—Original



PRIVATE NEW CAPITAL EXPENDITURE: TREND



COMPONENTS OF POPULATION GROWTH

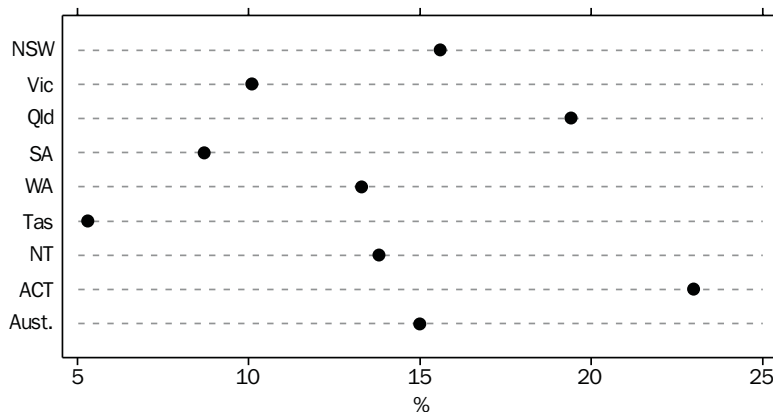


## FEATURE ARTICLE

## COMPUTING SERVICES INDUSTRY 1998-99

**Number of Businesses** At 30 June 1999, there were 729 computing services businesses in ACT (5% of the total number of these businesses nationally and well above the ACT proportion of population at 1.6%). The annualised growth rate of businesses between 1995-96 and 1998-99 was 23%, the highest of any State or Territory, followed by Queensland at 19%. The national growth rate was 15%.

ANNUALISED GROWTH RATE: 1995-96 to 1998-99



**Employment** In the year to 30 June 1999, these computing services businesses employed 4,205 persons in ACT which was 6% of national employment in this industry. ACT had an annualised growth rate in employment in the computing services industry of 23.6%, the highest of any State or Territory.

**Income** Total income for the industry in ACT was \$622.3 million, representing 6% of the total income generated nationally and with an annualised growth rate in income of 25.5%, was well above the rates in any State or Territory and the national growth rate of 9%.

The previous survey of the computing services industry was undertaken in 1995-96. The following table gives some ACT comparisons:

SELECTED CHARACTERISTICS, ACT

	1995-96	1998-99
Businesses at 30 June	392	729
Proportion of businesses nationally	4.0%	4.9%
Total employment at 30 June	2,228	4,205
Proportion of national employment in industry	4.0%	5.7%
Wages and salaries	\$106.8m	n.p.
Proportion of national wages and salaries	4.2%	n.p.
Total income generated	\$314.7m	\$622.3m
Proportion of national income generated	3.9%	5.9%

Selected national characteristics Selected Australian performance ratios for the computing services industry are:

- Total income per person employed \$142,300.
- Income from the provision of computer services to total income 86.6%.
- Income from customised software services and solutions to total income 24.4%.
- Income from the provision of bundled computer services to total income 32.0%.
- Labour cost per employee \$56,400.
- Labour costs to total expenses 42.1%.
- Operating profit before tax per person employed \$11,400.
- Operating profit margin 8.2%.

Selected State/Territory characteristics

A high proportion of industry income was generated by businesses operating in New South Wales (49%) and Victoria (29%). By way of comparison, New South Wales' share of the Australian population is 34% and Victoria's share of the Australian population is 25%.

For all other States and Territories, except for the Australian Capital Territory, the State shares of industry income were less than their respective population proportions. Businesses operating in the Australian Capital Territory accounted for 6% of employment and Industry income. Australian Capital Territory's share of the Australian population is 1.6%.

In terms of growth in the three years since 1995–96, the largest annualised percentage increases in total income were recorded by the Australian Capital Territory (26%), Queensland (15%) and South Australia (12%). The picture was similar when looking at growth in employment with Australian Capital Territory (annualised increase of 24%), Queensland (20%) and South Australia (14%) recording the three largest increases.

The industry average income per business was \$711,000 nationally. Businesses operating in the Australian Capital Territory (\$853,600 per business) and New South Wales (\$813,000 per business) had the highest average income per business. The lowest average income per business was recorded in Tasmania (\$255,000) and Northern Territory (\$252,800).

Source

This article is based on data in the ABS publication *Computing Services Industry, Australia, 1998–99* (Cat. no. 8669.0). Data contained in that publication relate to all employing businesses in the industry group 783 which were registered on the ABS Business Register and were operating in the year to 30 June 1999. Counts of businesses include only those that were operating at 30 June 1999.

Source *continued* The Computing Services industry Group 783 of the Australian and New Zealand Standard Industrial Classification (ANZSIC), 1993 comprises four classes:

- 7831 DATA PROCESSING SERVICES—includes businesses mainly engaged in providing data processing services;
- 7832 INFORMATION STORAGE AND RETRIEVAL SERVICES—includes businesses mainly providing storage of data other than library and bibliographic services;
- 7833 COMPUTER MAINTENANCE SERVICES—includes businesses mainly providing computer maintenance and repair services; and
- 7834 COMPUTER CONSULTANCY SERVICES—includes businesses mainly providing consultancy, analysis and programming services.



## 1

## BUSINESS EXPECTATIONS, TRADING PERFORMANCE, OPERATING INCOME(a)

	ACT	Aust.
	%	%
<b>Short-term</b>		
Dec qtr 1997–Mar qtr 1998	-1.1	-0.3
Mar qtr 1998–Jun qtr 1998	-0.1	1.7
Jun qtr 1998–Sep qtr 1998	2.7	1.1
Sep qtr 1998–Dec qtr 1998	3.5	1.6
Dec qtr 1998–Mar qtr 1999	-2.7	-0.9
Mar qtr 1999–Jun qtr 1999	0.4	1.8
Jun qtr 1999–Sep qtr 1999	1.4	1.8
Sep qtr 1999–Dec qtr 1999	1.9	2.4
Dec qtr 1999–Mar qtr 2000	-5.4	-0.7
Mar qtr 2000–Jun qtr 2000	1.5	1.6
Jun qtr 2000–Sep qtr 2000	-3.6	0.8
Sep qtr 2000–Dec qtr 2000	4.1	1.3
<b>Medium-term</b>		
Dec qtr 1997–Dec qtr 1998	2.9	3.0
Mar qtr 1998–Mar qtr 1999	2.6	2.6
Jun qtr 1998–Jun qtr 1999	6.9	2.7
Sep qtr 1998–Sep qtr 1999	7.5	2.9
Dec qtr 1998–Dec qtr 1999	2.6	2.7
Mar qtr 1999–Mar qtr 2000	1.7	2.3
Jun qtr 1999–Jun qtr 2000	5.7	3.3
Sep qtr 1999–Sep qtr 2000	2.8	2.7
Dec qtr 1999–Dec qtr 2000	0.1	1.8
Mar qtr 2000–Mar qtr 2001	1.6	2.5
Jun qtr 2000–Jun qtr 2001	-2.6	1.5
Sep qtr 2000–Sep qtr 2001	4.3	2.0

(a) These data are all expectations and are not subsequently revised.

Source: Australian Business Expectations, December Quarter 2000 (Cat. no. 5250.0).

Indicator	Unit	ACT			Aust.		
		Latest figure	% change from		Latest figure	% change from	
			Previous period	Same period previous year		Previous period	Same period previous year
<b>POPULATION, VITAL AND LABOUR</b>							
POPULATION, Mar qtr 00	'000	311.1	0.3	0.7	19 104.6	0.3	1.1
Natural increase	no.	700	6.1	-7.8	29 682	-6.6	-10.6
Net migration	no.	75	-132.5	-122.9	23 699	-14.1	68.1
Total increase	no.	775	80.7	79.8	53 381	-10.1	12.9
<b>LABOUR FORCE, Sep 00</b>							
Original series							
Employed	'000	172.0	0.1	7.4	9 193.3	1.6	3.2
Unemployed	'000	8.3	16.9	-12.6	632.0	5.1	-11.4
Unemployment rate	%	4.6	0.6	-0.9	6.4	0.2	-1.0
Participation rate	%	74.1	0.5	0.5	64.4	1.1	0.4
Long-term unemployed, Aug 00	no.	1 840	16.1	-38.2	167 490	4.2	-12.6
Long-term unemployed as percentage of total unemployed	%	25.8	4.0	-5.0	27.9	—	-1.5
Trend series							
Employed	'000	170.4	0.6	4.7	9 133.2	0.2	3.3
Unemployed	'000	7.9	-3.7	-19.4	613.2	-1.2	-9.0
Unemployment rate	%	4.4	-0.2	-1.3	6.3	-0.1	-0.8
Participation rate	%	73.3	0.2	0.7	63.9	—	0.7
<b>WAGE AND SALARY EARNERS</b>							
Number employed—Trend series, Jun qtr 00							
Public sector	'000	69.3	0.6	3.7	1 461.7	-0.3	0.8
Private sector	'000	85.5	2.4	2.9	5 786.9	1.0	1.1
Total	'000	154.8	1.6	3.3	7 248.6	0.7	1.0
Gross earnings—Original series, Jun qtr 00							
Public sector	\$m	824.6	-10.5	5.4	15 059.5	-2.7	2.4
Private sector	\$m	606.6	0.4	-11.8	48 010.7	3.8	3.9
Total	\$m	1 431.2	-6.2	-2.6	63 070.2	2.1	3.6
JOB VACANCIES, Aug qtr 00	'000	3.0	—	-9.1	127.7	19.6	16.1
<b>INDUSTRIAL DISPUTES IN PROGRESS, Jun 00</b>							
Working days lost	'000	0.4	—	—	61.2	-7.3	113.2
Days lost per '000 employees (year ended Jun 00)	no.	33.0	6.5	230.0	104.0	4.0	85.7
<b>BUILDING AND CONSTRUCTION</b>							
<b>HOUSING FINANCE, Jul 00</b>							
Secured commitments to individuals for							
Original series							
Construction of dwellings	\$m	11.0	10.0	-8.3	545.0	-10.4	-38.4
Purchase of new dwellings	\$m	3.0	-40.0	-62.5	183.0	-26.2	-25.0
Purchase of established dwellings	\$m	64.0	-9.9	-11.1	4 516.0	-4.8	-5.2
Re-financing	\$m	10.0	-33.3	—	1 018.0	-13.9	17.6
Total housing commitments	\$m	88.0	-12.9	-13.7	5 244.0	-6.4	-11.0
Seasonally adjusted series							
Total housing commitments	\$m	91.0	-9.9	-10.8	5 328.0	2.7	-7.8
Trend series							
Dwelling units financed	no.	758	-4.8	-10.6	40 950	-1.6	-9.3
Total housing commitments	\$m	99.0	-5.7	-10.0	5 332.0	-3.4	-10.7
<b>BUILDING APPROVALS, Aug 00</b>							
Original series							
Dwelling units	no.	170	123.7	46.6	9 858	6.9	-36.7
Value of new residential	\$m	25.4	113.4	61.8	1 278.5	7.0	-31.8
Value of residential alterations and additions	\$m	4.4	238.5	-56.0	254.7	0.5	-17.9
Value of non-residential	\$m	10.3	-31.3	-14.9	980.6	-17.3	-11.3
Value of total building	\$m	40.1	42.2	5.8	2 513.8	-4.6	-23.6
Trend series							
Dwelling units	no.	128	-5.2	-16.9	9 100	-9.1	-37.1

Indicator	Unit	ACT			Aust.		
		Latest figure	% change from		Latest figure	% change from	
			Previous period	Same period previous year		Previous period	Same period previous year
<b>BUILDING AND CONSTRUCTION continued</b>							
BUILDING COMMENCEMENTS, Jun qtr 00							
New houses	no.	422	11.1	11.3	29 706	-6.2	8.3
Value of new houses commenced	\$m	59.8	4.4	20.1	3 999.4	-4.6	18.1
Value of non-residential building commenced	\$m	121.2	36.5	78.0	3 042.9	9.6	7.6
Value of total commencements	\$m	209.2	9.0	38.2	9 380.6	-0.2	16.1
PRICE INDEXES							
Established house price index, Jun qtr 00	no.	142.0	1.4	9.7	147.3	2.4	9.7
<b>ENGINEERING CONSTRUCTION (Jun qtr 00)</b>							
Private sector							
Value of work commenced	\$m	50.6	-29.5	208.5	2 753.2	-20.1	-13.1
Value of work done	\$m	48.3	-13.9	109.1	2 946.4	2.7	-7.7
Value of work yet to be done	\$m	64.0	77.3	68.9	5 069.3	-10.3	-10.9
Value of work done by public sector	\$m	30.9	32.1	6.9	2 266.9	19.1	6.6
<b>PRICES, WAGES AND CONSUMER SPENDING</b>							
CONSUMER PRICE INDEX, Jun qtr 00 (a)							
Food	no.	131.1	0.4	2.2	130.2	0.9	1.9
Housing	no.	100.6	1.6	6.2	101.2	0.5	4.8
Transportation	no.	136.4	0.8	6.4	132.1	1.5	7.5
All groups	no.	125.9	0.8	3.6	126.2	0.8	3.2
AVERAGE WEEKLY EARNINGS, May 00							
Original series							
Males	\$	979.8	1.8	10.5	832.8	1.0	4.3
Females	\$	826.2	2.1	6.4	697.9	0.9	4.2
Persons	\$	911.8	1.9	8.4	782.6	1.0	4.2
Trend series							
Males	\$	989.3	2.4	11.5	835.0	1.6	5.1
Females	\$	827.5	1.1	5.9	697.7	1.1	4.0
Persons	\$	914.0	1.6	8.4	783.7	1.4	4.6
WAGE COST INDEX, Jun qtr 00 (b)							
Public sector	no.	106.6	0.3	2.0	109.1	0.6	2.7
Private sector	no.	107.8	0.6	3.4	108.1	0.6	2.9
Total	no.	107.0	0.4	2.5	108.4	0.6	2.8
<b>RETAIL TURNOVER, Aug 00</b>							
Original series							
Food retailing	\$m	94.9	3.5	19.8	5 004.2	2.9	5.4
Department stores	\$m	22.3	7.7	9.9	990.8	16.9	10.1
Hospitality and services	\$m	39.4	1.3	13.9	2 210.7	4.3	11.5
All other retailing	\$m	88.0	2.6	6.8	4 101.1	6.9	4.3
Total	\$m	244.6	3.2	13.0	12 306.8	5.5	6.4
Trend series							
Food retailing	\$m	n.p.	n.a.	n.a.	n.p.	n.a.	n.a.
Department stores	\$m	n.p.	n.a.	n.a.	n.p.	n.a.	n.a.
Hospitality and services	\$m	n.p.	n.a.	n.a.	n.p.	n.a.	n.a.
All other retailing	\$m	n.p.	n.a.	n.a.	n.p.	n.a.	n.a.
Total	\$m	n.p.	n.a.	n.a.	n.p.	n.a.	n.a.

(a) Base year: 1989-90 = 100.0.

(b) Base of each index: September quarter 1997 = 100.0.

Indicator	Unit	ACT			Aust.		
		% change from			% change from		
		Latest figure	Previous period	Same period previous year	Latest figure	Previous period	Same period previous year
<b>TOURISM AND TRANSPORT</b>							
HOTELS, MOTELS AND GUEST HOUSE ACCOMMODATION, Jun qtr 00							
Original series							
Room nights occupied	'000	296.4	22.9	14.1	10 000.0	-0.9	6.1
Takings at current prices	\$m	30.1	27.0	18.5	1 039.5	-4.5	9.8
Guest arrivals	'000	222.8	23.8	17.9	7 847.0	-1.1	4.4
Guest nights	'000	486.8	21.0	17.0	17 370.0	-3.7	5.8
Room occupancy rate	%	64.7	7.1	3.8	57.1	-1.1	0.9
NEW MOTOR VEHICLE REGISTRATIONS, Aug 00							
Motor vehicles	no.	1 312	5.7	19.4	76 365	-3.3	27.5
Seasonally adjusted motor vehicles	no.	1 161	-7.3	10.3	75 066	-3.4	24.4
Trend motor vehicles	no.	1 112	1.3	3.0	69 596	5.0	13.5
<b>STATE ACCOUNTS</b>							
STATE ACCOUNTS, Jun qtr 00							
Trend series (chain volume measure) (a)							
Household final consumption expenditure	\$m	1 755	2.2	8.1	93 580	0.8	3.9
General government final consumption expenditure	\$m	2 586	3.6	18.3	30 329	2.4	9.9
Private gross fixed capital formation	\$m	411	1.2	32.2	31 906	1.8	7.4
Public gross fixed capital formation	\$m	228	-3.0	-14.3	6 415	-4.4	-3.8
State final demand	\$m	4 959	2.1	13.0	157 959	1.0	4.5
GROSS STATE PRODUCT (trend, chain volume measures) 1998-99	\$m	11 943	4.3	n.a.	563 517	6.1	6.1
PRIVATE NEW CAPITAL EXPENDITURE, Jun qtr 00							
Original series (at current prices)							
Buildings and structures	\$m	24	14.3	4.3	3 215	16.2	14.8
Equipment, plant and machinery	\$m	86	21.1	75.5	8 126	17.1	3.8
Total	\$m	110	19.6	52.8	11 341	16.8	6.7
Trend series (at current prices)							
Buildings and structures	\$m	23	0.0	27.8	2 966	5.6	-5.1
Equipment, plant and machinery	\$m	83	7.8	48.2	7 529	-1.2	-1.0
Total	\$m	106	6.0	43.2	10 495	0.7	-2.2
INTERNATIONAL MERCHANDISE TRADE, Jun qtr 00							
Imports	\$m	3	-	-66.7	28803	9.0	21.9
Exports	\$m	7	-	16.7	26656	11.7	31.4

(a) Quarterly state final demand details are released as a special data service (Product no. 5206.0.40.001).

(b) Reference year for chain volume measures is 1998-99.

Source: ABS publications: Australian Demographic Statistics (Cat. no. 3101.0), Australian National Accounts: State Accounts (Cat. no. 5242.0), Average Weekly Earnings, States and Australia (Cat. no. 6302.0), Building Activity, Australia (Cat. no. 8752.0), Building Approvals, Australia (Cat. no. 8731.0), Consumer Price Index (Cat. no. 6401.0), Housing Finance for Owner Occupation, Australia (Cat. no. 5609.0), House Price Indexes: Eight Capital Cities (Cat. no. 6416.0), Industrial Disputes, Australia (Cat. no. 6321.0), Job Vacancies and Overtime, Australia (Cat. no. 6354.0), Labour Force, Australia, Preliminary (Cat. no. 6202.0), Labour Force, Australia (Cat. no. 6203.0), New Motor Vehicle Registration, Australia (Cat. no. 9301.0), Price Index of Materials Used in Housing Building (Cat. no. 6408.0), Private New Capital Expenditure, State Estimates (Cat. no. 5646.0), Retail Trade, Australia (Cat. no. 8501.0), Tourism Indicators, Australia (Cat. no. 8634.0), Tourist Accommodation, ACT (Cat. no. 8635.8), Wage Cost Index, Australia (Cat. no. 6345.0).

Indicator	Unit	Latest period	NSW	Vic.	Qld	SA	WA	Tas.	NT	ACT	Aust.
<b>POPULATION</b>	'000	Mar qtr 00	6 448.8	4 753.9	3 549.3	1 496.1	1 877.5	470.3	194.5	311.1	19 104.6
<b>LABOUR FORCE</b> (trend)											
Employed persons	'000	Sep 00	3 066.4	2 293.1	1 702.5	681.6	929.1	199.1	90.0	170.4	9 133.2
Unemployment rate	%	Sep 00	5.4	6.2	7.5	7.6	6.0	9.7	5.3	4.4	6.3
<b>WAGE AND SALARY EARNERS</b> (trend)											
Public sector	'000	Jun qtr 00	465.7	309.2	292.1	114.6	147.7	41.2	22.3	69.3	1 461.7
Private sector	'000	Jun qtr 00	1 944.5	1 553.5	1 025.7	416.6	589.0	115.4	56.7	85.5	5 786.9
Total public and private sector (trend)	'000	Jun qtr 00	2 410.2	1 862.7	1 317.8	531.2	736.7	156.6	79.0	154.8	7 248.6
<b>STATE ACCOUNTS</b>											
Gross state product (chain volume measures)(a)(b)	\$m	1998-99	209 937	151 213	96 000	40 493	63 198	11 059	6 460	11 822	591 546
<b>PRIVATE NEW CAPITAL EXPENDITURE</b> (trend)											
Total	\$m	Jun qtr 00	3 863	2 682	1 870	650	1 238	125	125	106	10 495
<b>BUILDING APPROVALS</b>											
Dwelling units approved(original)	no.	Aug 00	2 725	2 758	2 215	522	1 291	83	94	170	9 858
Dwelling units approved (trend)	no.	Aug 00	2 331	2 820	1 815	516	1 235	98	106	128	9 100
Value of non-residential building approved (original)	\$m	Aug 00	273.1	264.3	176.4	89.6	93.0	10.7	63.2	10.3	980.6
Value of all buildings approved (original)	\$m	Aug 00	755.7	739.3	454.5	159.3	264.3	23.7	77.1	40.1	2 513.8
<b>ENGINEERING CONSTRUCTION</b>											
Value of engineering construction work done	\$m	Jun qtr 00	1 802.7	858.9	1 325.3	347.5	663.9	73.1	62.6	79.2	5 213.2
<b>AVERAGE WEEKLY EARNINGS</b> (trend)											
Full-time adult ordinary time	\$	May 00	824.9	765.8	724.9	728.4	804.1	736.6	797.4	914.0	783.7
<b>RETAIL TRADE</b> (trend)											
Retail turnover	\$m	Aug 00	n.p.	n.p.	n.p.	n.p.	n.p.	n.p.	n.p.	n.p.	n.p.
<b>HOTELS, MOTELS &amp; GUEST HOUSE ACCOMMODATION</b>											
Room nights occupied	'000	Jun qtr 00	3 323.9	1 628.9	2 677.2	536.4	934.0	248.5	354.6	296.4	10 000.0
Room occupancy rate	%	Jun qtr 00	58.1	57.1	56.5	56.4	54.4	49.7	63.0	64.7	57.1
<b>NEW MOTOR VEHICLE REGISTRATIONS</b> (trend)											
Total	no.	Aug 00	24 245	18 093	13 583	4 110	6 596	1 192	665	1 112	69 596
	Unit	Latest period	Syd.	Melb.	Bris.	Adel.	Perth	Hob.	Dar.	Canb.	Aust.
<b>CONSUMER PRICE INDEX(c)</b>											
Food		Jun qtr 00	130.7	130.0	129.1	131.9	129.7	129.1	130.0	131.1	130.2
Housing		Jun qtr 00	109.6	91.7	105.4	98.3	95.4	99.2	118.2	100.6	101.2
Transportation		Jun qtr 00	133.5	131.2	130.5	131.9	131.7	129.3	129.3	136.4	132.1
All Groups		Jun qtr 00	127.0	125.6	126.4	127.6	124.0	126.5	125.7	125.9	126.2
<b>AVERAGE RETAIL PRICES</b>											
Milk, carton, supermarket sales	1 litre	Jun qtr 00	135	150	145	143	145	135	145	123	n.a.
Bread, white loaf, sliced, supermarket sales	680 g	Jun qtr 00	231	244	215	215	224	241	225	231	n.a.
Beef, rump steak	1 kg	Jun qtr 00	1 297	1 137	1 139	1 303	1 171	1 097	1 298	1 250	n.a.
Chicken, frozen	1 kg	Jun qtr 00	374	377	331	338	363	382	381	384	n.a.
Potatoes	1 kg	Jun qtr 00	105	136	103	81	143	102	135	122	n.a.
Coffee, instant (jar)	150 g	Jun qtr 00	555	615	573	521	598	651	624	634	n.a.
Scotch nip, public bar	30 ml	Jun qtr 00	346	342	285	369	393	275	352	283	n.a.
Private motoring petrol											
Leaded	1 litre	Jun qtr 00	88.7	84.6	79.2	86.1	86.9	93.7	95.7	90.7	n.a.
Unleaded	1 litre	Jun qtr 00	85.8	82.0	76.3	83.4	84.1	91.6	92.9	87.8	n.a.

(a) Experimental series. Users are cautioned these estimates are derived indirectly by calculating a deflator from the expenditure components of the state series concerned. Therefore, in general, the sum of the state estimates does not equal the estimates for Australia.

(b) Reference year for chain volume measures is 1998-99.

(c) Base year: 1989-90 = 100.0.

<i>Indicator</i>	<i>Latest period</i>	<i>NSW</i>	<i>Vic.</i>	<i>Qld</i>	<i>SA</i>	<i>WA</i>	<i>Tas.</i>	<i>NT</i>	<i>ACT</i>	<i>Aust.</i>
<b>POPULATION</b>	Mar qtr 00	0.2	0.4	0.4	0.1	0.4	—	0.2	0.3	0.3
<b>LABOUR FORCE</b> (trend)										
Employed persons	Sep 00	0.1	0.3	0.2	0.2	0.2	-0.1	-0.2	0.6	0.2
Unemployment rate	Sep 00	-0.1	-0.1	-0.1	-0.1	-0.1	0.1	0.1	-0.2	-0.1
<b>WAGE AND SALARY EARNERS</b> (trend)										
Public sector	Jun qtr 00	0.3	2.0	1.0	0.6	-0.1	0.2	1.8	0.3	0.8
Private sector	Jun qtr 00	-1.4	2.3	0.7	1.1	0.6	-1.0	3.8	2.7	0.5
Total public and private sector	Jun qtr 00	-1.0	2.3	0.8	1.0	0.5	-0.7	3.2	1.6	0.5
<b>STATE ACCOUNTS</b>										
Gross state product (chain volume measures)(a)(b)	1998-99	4.1	6.2	4.5	2.1	2.1	2.5	7.6	2.6	4.5
<b>PRIVATE NEW CAPITAL EXPENDITURE</b> (trend)										
Total (at current prices)	Jun qtr 00	-2.0	-1.8	0.3	-3.7	-3.3	-1.8	6.5	6.0	0.7
<b>BUILDING APPROVALS</b>										
Dwelling units approved (original)	Aug 00	23.0	-18.0	42.3	-26.5	14.9	-1.2	1.1	123.7	6.9
Dwelling units approved (trend)	Aug 00	-12.3	-7.4	-11.2	-8.8	-5.7	-14.8	1.0	-5.2	-9.1
Value of non-residential building approved (original)	Aug 00	-4.0	-53.0	17.6	47.9	-8.3	46.6	1304.4	-31.3	-17.3
Value of all buildings approved (original)	Aug 00	13.2	-35.9	31.7	3.8	4.2	33.9	400.6	42.2	-4.6
<b>ENGINEERING CONSTRUCTION</b>										
Value of engineering construction work done	Jun qtr 00	25.3	-2.6	7.8	-0.3	-0.2	2.2	5.6	-0.4	9.2
<b>AVERAGE WEEKLY EARNINGS</b> (trend)										
Full-time adult ordinary time	May qtr 00	1.5	1.0	1.1	1.4	2.0	1.7	1.3	1.6	1.4
<b>RETAIL TRADE</b> (trend)										
Retail turnover	Aug 00	n.a.	n.a.	n.a.	n.a.	n.a.	n.a.	n.a.	n.a.	n.a.
<b>HOTELS, MOTELS &amp; GUEST HOUSE ACCOMMODATION</b>										
Room nights occupied	Jun qtr 00	-1.9	-8.1	4.2	-2.6	0.2	-25.8	-43.5	9.3	-0.9
Room occupancy rate	Jun qtr 00	-2.2	-5.2	1.8	-1.6	-0.1	-16.5	15.3	3.8	-1.1
<b>NEW MOTOR VEHICLE REGISTRATIONS</b> (trend)										
Total	Aug 00	4.9	5.8	4.3	4.3	6.0	2.1	2.6	1.3	5.0
	<i>Latest period</i>	<i>Syd.</i>	<i>Melb.</i>	<i>Bris.</i>	<i>Adel.</i>	<i>Perth</i>	<i>Hob.</i>	<i>Dar.</i>	<i>Canb.</i>	<i>Aust.</i>
<b>CONSUMER PRICE INDEX(c)</b>										
Food	Jun qtr 00	0.8	1.3	1.3	0.5	-0.5	1.0	2.0	0.4	0.9
Housing	Jun qtr 00	0.9	—	0.3	0.4	0.3	0.4	0.6	1.6	0.5
Transportation	Jun qtr 00	1.8	1.5	1.6	1.2	1.0	2.1	2.5	0.8	1.5
All Groups	Jun qtr 00	1.0	0.7	0.7	0.6	0.7	1.0	1.0	0.8	0.8
<b>AVERAGE RETAIL PRICES</b> (cents)										
Milk, carton, supermarket sales	Jun qtr 00	3.1	2.7	7.4	0.7	-0.7	0.7	0.7	2.5	n.a.
Bread, white loaf, sliced, supermarket sales	Jun qtr 00	-1.3	1.2	1.4	—	—	-0.8	—	-0.4	n.a.
Beef, rump steak	Jun qtr 00	0.3	2.1	0.7	5.3	-2.9	4.4	9.1	-2.0	n.a.
Chicken, frozen	Jun qtr 00	1.1	8.0	4.1	-10.3	2.8	3.0	-2.6	5.5	n.a.
Potatoes	Jun qtr 00	-6.3	-2.9	2.0	11.0	-4.7	-6.4	2.3	-7.6	n.a.
Coffee, instant (jar)	Jun qtr 00	-9.6	-1.1	-6.7	-6.1	-7.1	-1.5	2.0	-0.3	n.a.
Scotch nip, public bar	Jun qtr 00	1.8	2.4	1.4	—	—	3.4	5.7	1.1	n.a.
Private motoring petrol										
Leaded	Jun qtr 00	3.9	2.7	5.6	3.0	2.1	4.0	3.8	2.0	n.a.
Unleaded	Jun qtr 00	3.9	2.6	5.5	3.0	1.9	4.0	3.5	1.9	n.a.

(a) Experimental series. Users are cautioned these estimates are derived indirectly by calculating a deflator from the expenditure components of the state series concerned. Therefore, in general, the sum of the state estimates does not equal the estimates for Australia.

(b) Reference year for chain volume measures is 1998-99.

(c) Base year: 1989-90 = 100.0.

## INDEX OF FEATURE ARTICLES PUBLISHED IN ACT BUSINESS INDICATORS

<i>Issue</i>	<i>Title</i>	<i>Page reference</i>
Oct 2000	Computing Services Industry 1998-99	6-8
Sep 2000	Motor Vehicle Use in the ACT	6
Aug 2000	Household Expenditure on Goods and Services in the ACT	6
Jul 2000	Small Business in the ACT	6
Jun 2000	Sports Attendance	7
	Attendance at Selected Cultural Venues	8
May 2000	Employee Earnings, Benefits and Trade Union Membership	7-8
Apr 2000	Emergency Services and Public Transport Usage in the ACT	8-12
Mar 2000	Forms of Employment	6-8
Feb 2000	Job Search Experience of Unemployed Persons	6-7
Jan 2000	Transition from Education to Work, May 1999	6-7
Dec 1999	Structure of the ACT Economy	6
	Participation in Sport and Physical Activities	7
Nov 1999	Crime and Safety in the ACT	6-8
Oct 1999	Labour Force Experience in the ACT	6-8
Sep 1999	Career Experience in the ACT	7-8
	Carers in the ACT	9
Aug 1999	Stock of Human Resources in Science and Technology	6-8
Jul 1999	Persons with a Disability in the ACT	6-9
Jun 1999	Participation in Education in the ACT	6-8
May 1999	Transition from Education to Work of Persons Aged 15-64 in the ACT	7-8
Apr 1999	Persons Not in the Labour Force in the ACT	6-8
Mar 1999	Education and Labour Force Status of the ACT's Young People	6-8
Feb 1999	Income and Living Standards in the ACT	6-9
Jan 1999	Education and Training Experience of ACT Residents	6-9
Dec 1998	Families and Labour Force Status in the ACT	6-9
Nov 1998	Retrenchment and Redundancy in the ACT	6-8
	Retail Turnover in the ACT	9
Oct 1998	Research and Experimental Development in the ACT	6-9
Sep 1998	Labour Force Mobility in the ACT	6-7
	Income Distribution in the ACT	8-9
Aug 1998	ACT Investors in Rental Dwellings	6-8
Jul 1998	Retirement and Retirement Intentions	6-9
Jun 1998	Profile of Small Business in the ACT	7-9
May 1998	Participation in Education in the ACT	7-8
Apr 1998	Retail Turnover in the ACT by Type of Retailing and Shopping Centre	7
	Shopping Preferences in the ACT	7-9
Mar 1998	Characteristics of Small Business	8-9
Feb 1998	Weekly Earnings of Employees in the ACT	8-9
Jan 1998	Transition from Education to Work of Working Age persons in the ACT	7-8
	Job Search Experience of Unemployed Persons in the ACT	9

## FOR MORE INFORMATION...

- INTERNET* **www.abs.gov.au** the ABS web site is the best place to start for access to summary data from our latest publications, information about the ABS, advice about upcoming releases, our catalogue, and Australia Now—a statistical profile.
- LIBRARY* A range of ABS publications is available from public and tertiary libraries Australia-wide. Contact your nearest library to determine whether it has the ABS statistics you require, or visit our web site for a list of libraries.
- CPI INFOLINE* For current and historical Consumer Price Index data, call 1902 981 074 (call cost 77c per minute).
- DIAL-A-STATISTIC* For the latest figures for National Accounts, Balance of Payments, Labour Force, Average Weekly Earnings, Estimated Resident Population and the Consumer Price Index call 1900 986 400 (call cost 77c per minute).

**INFORMATION SERVICE**

Data which have been published and can be provided within five minutes are free of charge. Our information consultants can also help you to access the full range of ABS information—ABS user-pays services can be tailored to your needs, time frame and budget. Publications may be purchased. Specialists are on hand to help you with analytical or methodological advice.

- PHONE* **1300 135 070**
- EMAIL* **client.services@abs.gov.au**
- FAX* 1300 135 211
- POST* Client Services, ABS, GPO Box 796, Sydney 1041

## WHY NOT SUBSCRIBE?

ABS subscription services provide regular, convenient and prompt deliveries of ABS publications and products as they are released. Email delivery of monthly and quarterly publications is available.

- PHONE* 1300 366 323
- EMAIL* subscriptions@abs.gov.au
- FAX* 03 9615 7848
- POST* Subscription Services, ABS, GPO Box 2796Y, Melbourne 3001



2130380010004  
ISSN 1320-808X

RRP \$17.00

© Commonwealth of Australia 2000